

Skiing Fitness Assessment

1. Australian Institute of Sport 20m Shuttle-Run

Rationale for inclusion:

The 20m shuttle-run is a test of aerobic capacity.

Equipment:

Flat non-slip surface, recommended minimum 30m long, width is determined by how many athletes are running at the same time. Use the same surface from test to test if possible.

- Shuttle-run app or MP3 file
- Smart phone or MP3 player
- Speakers (loud enough to hear the audio the full length of the test)
- Marker or tape to clearly mark the turning points
- Tape measure 20m or longer to determine the turning points

Calibration/Maintenance:

Follow the calibration instructions prior to every test and modify the running distance according to the table provided.

Methodology:

Follow the audio directions for the correct protocol.

- Mark out two lines, 20m apart on a non-slip surface – preferably an indoor court surface.
- Check that the athlete has good footwear. If the floor surface is slippery, spray some sports drink on their shoes – it works!
- The test starts with a countdown beep. The athlete runs along the 20m track and gets to the line in time with the beep. The athlete then turns and runs back, getting back to the start line in time with the next beep. The beeps get closer together as the test progresses, so the athlete has to run faster to stay in time. The test is a maximal test and the athlete is encouraged to run in time with the beeps for as long as possible.
- When the athlete can no longer keep in time with the beep and falls behind the beep by more than 1 meter, a verbal warning is given. If they do not make it back in time with the beep on the next lap, the athlete is asked to stop and the score for the stage/level is recorded. The score is the last level that the athlete successfully achieved in time with the beep.
- The athlete may miss the beep multiple times as long as they are back to the other line on the next beep. Missing two consecutive beeps ends the test.
- It is important that the athletes run in time with the beep and do not run ahead of it. This will cause additional fatigue.

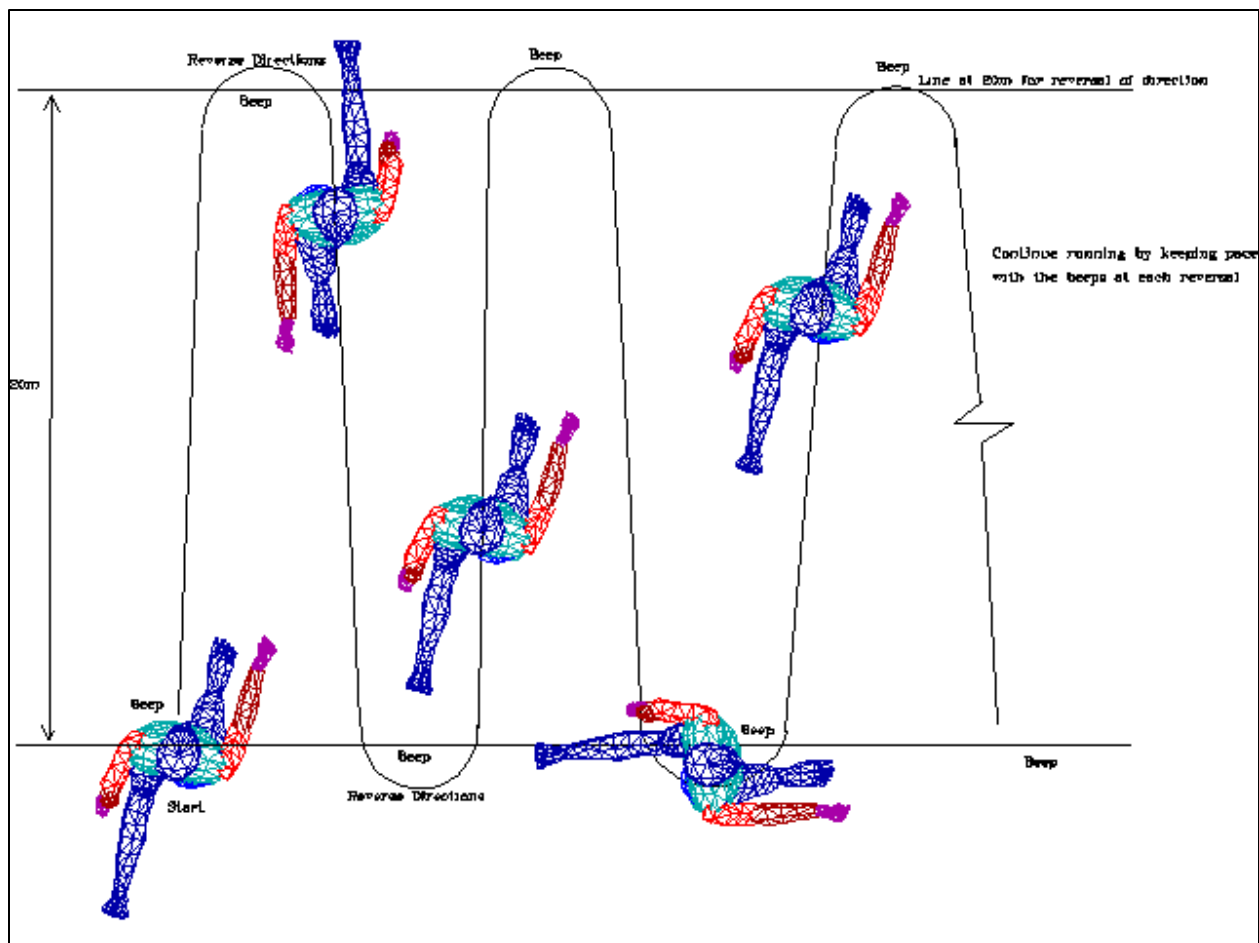
Specific Warm-up:

- Athlete should perform 5-10 shuttles of the first level in order to gain familiarity with procedure and timing of the MP3 audio.

Scoring:

- Record the shuttle and level achieved.

USSA Alpine Skiing Fitness Assessment



2. Broad & Triple Jump

Rationale for inclusion:

Test lower extremity power and coordination utilizing a simple, safe, and common movement pattern (13). The triple-broad jump is included to assess strength-speed, agility, balance, and skill (8, 9, 13-15).

Equipment:

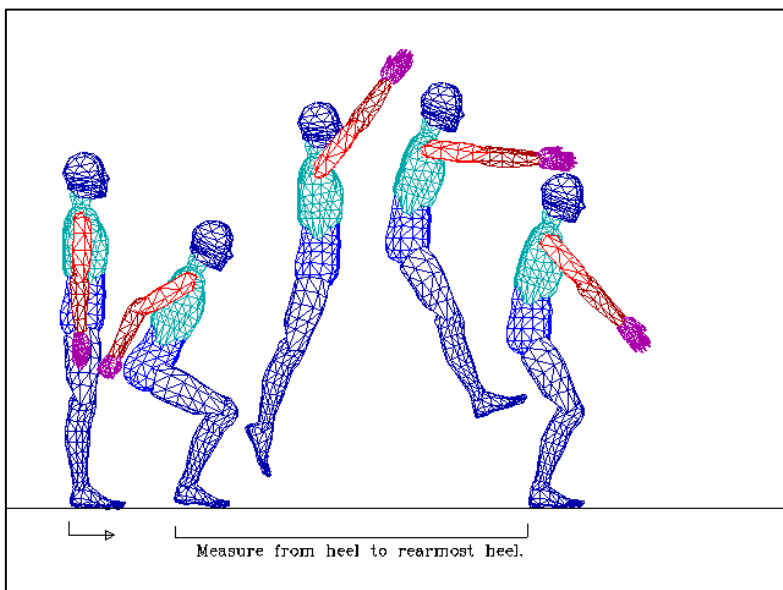
A tape measure or other measuring device as well as a safe jumping and landing surface of approximately 3m for Levels 1 and 2 and 10m for Levels 3-6.

Broad Jump Protocol – All Ages:

- Start by taping or otherwise securing a tape measure or similar tool to the ground for ease of testing.
- Line up with the feet under the hips, toes forward, heels at 0cm, and hands in a self-selected position.
- Jump as far forward as possible.
- Mark the distance at the heel. If the feet land staggered, measure at the heel that traveled the shorter distance. Only measure a repetition that displays a safe and efficient landing.
- Athletes get three trials, with all trials recorded, and the best of the three reported to the athlete and used for further analyses.

Scoring:

- The longest safe and efficiently-landed jump will be recorded in centimeters
- Recorded to the nearest centimeter.



Warm-up:

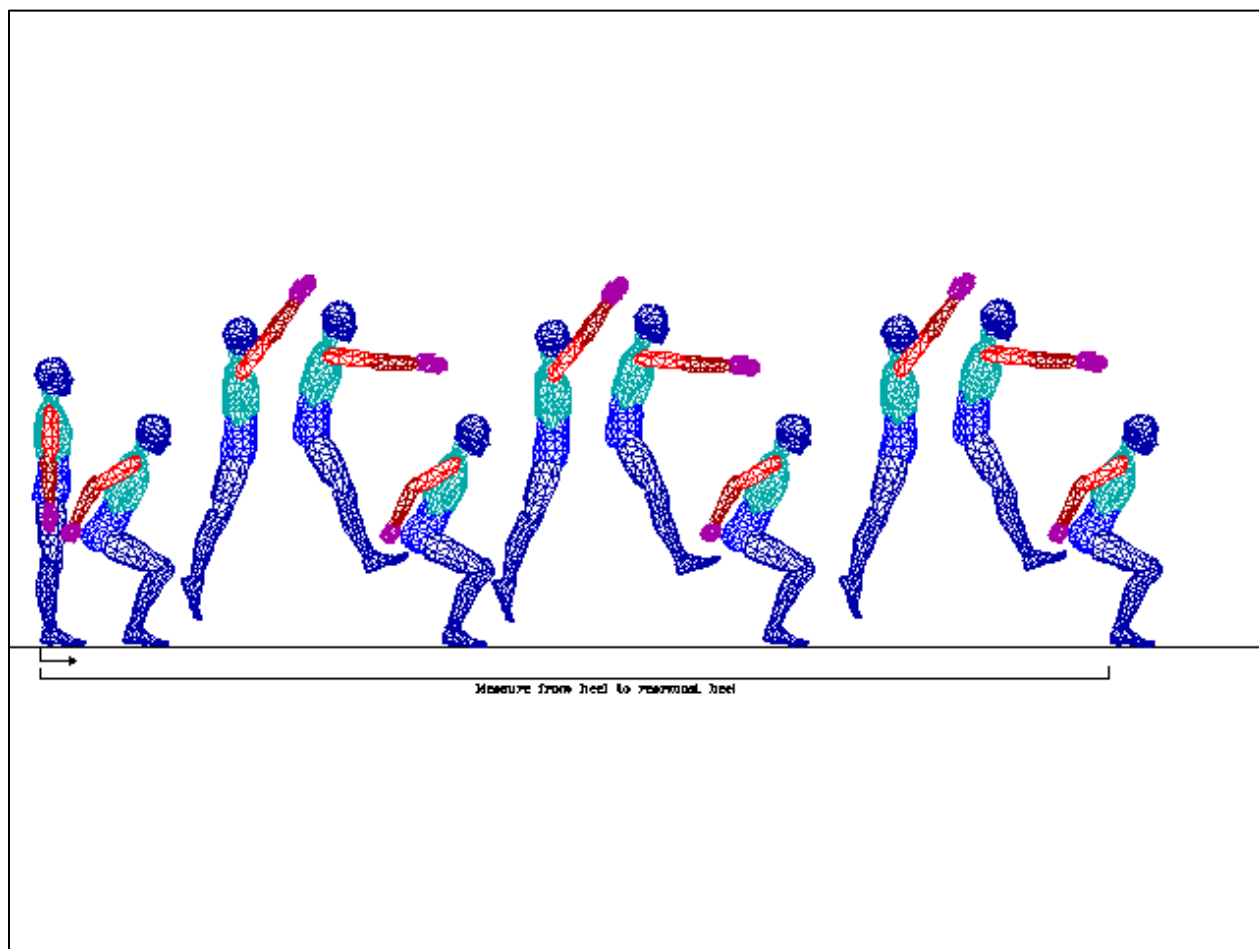
This test has a potential for injury and thereby requires a thorough and focused warm-up. Athletes should perform approximately 5-10 minutes of vigorous exercise including running, skipping, hopping, arm and leg swings, etc. Pre-test trials should be encouraged with each athlete performing from one to three practice jumps.

Triple Broad Jump Protocol – Age 10 and older:

- Start by taping or otherwise securing a tape measure or similar object to the ground for ease of testing.
- Line up with the feet under the hips, toes forward, heels at 0cm, and hands in a self-selected position.
- Jump as far forward as possible.
- As soon as the feet simultaneously land, rebound straight into a second broad jump, followed immediately by a third, sticking the final landing.
- Mark the distance at the heel. Only measure a repetition that displays a safe and efficient landing.
- Athletes get three trials, with the best of three being officially recorded.

Scoring:

- The longest safe and efficiently-landed jump will be recorded in centimeters



3. 20m Sprint

Rationale for inclusion:

The 20m sprint test is an assessment of the athlete's acceleration and speed.

Equipment:

Flat non-slip surface, recommended minimum 30m long. Use the same surface from test to test if possible.

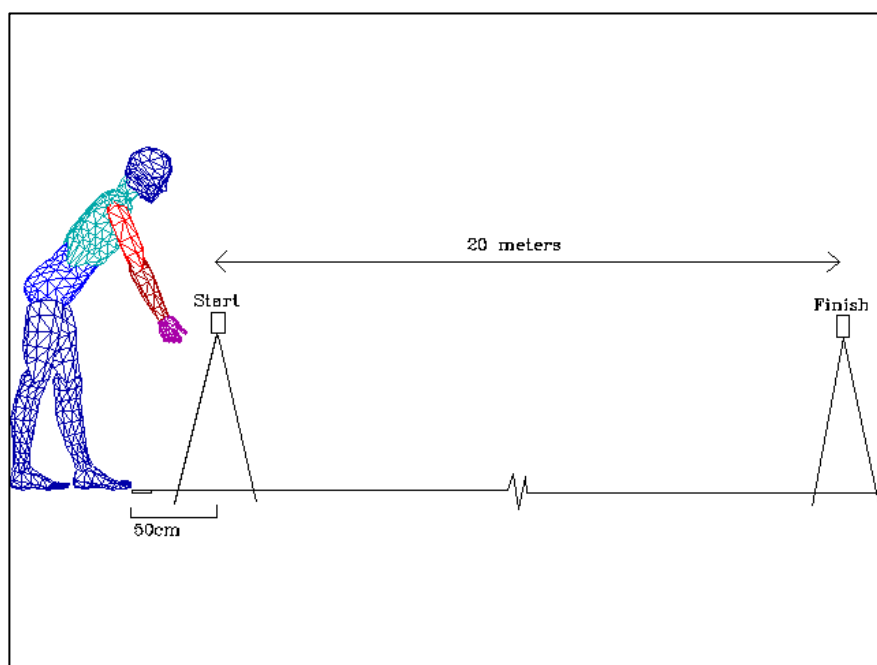
- Tape measure 20m or longer
- Electronic timing gates
- Marker or tape to clearly mark the start & end points

Protocol:

- Mark out two lines, 20m apart on a non-slip surface – preferably an indoor court surface, starting close but not against one wall (minimum 2m).
- Mark an additional start line 50cm before the 20m start line (this will ensure the timing gates aren't broken by mistake)
- Align electronic timing gates at the 20m start and end lines at a height of 1m
- Check that the athlete has good footwear. If the floor surface is slippery, spray some sports drink on their shoes – it works!
- Ensure the athlete has fully warmed up including practice attempts at ~50% and 75% of maximal effort
- Starting at the line 50cm before the 20m start line, from a standing start when ready the athlete accelerates as fast as they can through the 20m sprint (remember to tell the athlete to continue sprinting all the way through the finish line).
- Athletes get three trials, with the best of three being officially recorded

Scoring:

- Record the fastest of three attempts is recorded in to the nearest hundredth of a second (example 3.41s).



4. Strict Pull-Up

Rationale for inclusion:

Upper body coordination and bodyweight management in the context of arm and back pulling strength in addition to torso and lower extremity control.

Equipment:

A pull-up bar high enough for the tallest athletes to hang from without touching the ground with their feet pulled behind them.

Strict Pull-Up Protocol:

- Grasp the bar just outside of shoulder width with an overhand grip.
- Begin test from a dead hang – body motionless, arms completely extended, and shoulders, hips, knees and ankles in a line.
- Keeping the shoulders, hips, knees and ankles in line, pull the body up until the height of the chin exceeds the height of the bar.
- Lower the body down to full extension between each rep.
- A “No-Rep” will be given if:
 - Any break in the shoulder/hip/knee/ankle line occurs.
 - The athlete fails to return to full extension and pause briefly between reps.
 - The athlete fails to pull to proper height.
 - The athlete utilizes a swinging motion to complete the rep.
- Athletes will continue performing pull-ups until they can no longer complete reps within the criteria or until they drop from the pull-up bar.

Scoring:

Record the total number of pull-ups completed within the criteria prior to the athlete failing and/or dropping from the bar.

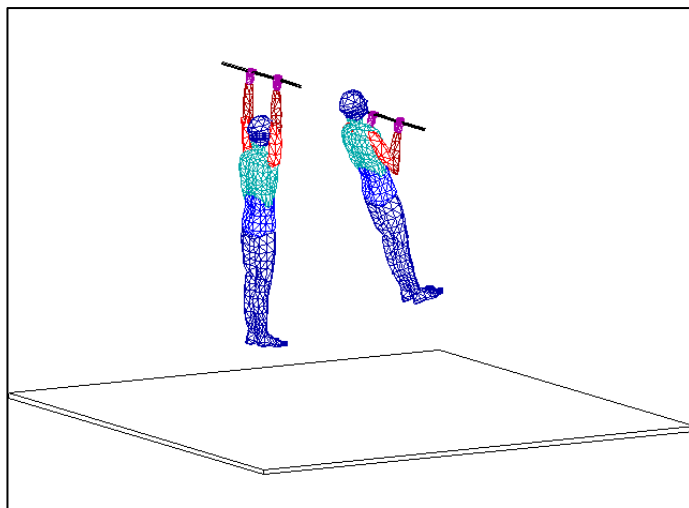
If the athlete cannot perform a single pull-up, he or she will switch to the bar-hang protocol.

Bar-Hang Protocol – Used if Unable to Complete 1 Pull Up:

- Grasp the bar just outside of shoulder width with an overhand grip.
- Using a box, bench, or other means, jump or be assisted to get the chin over the bar.
- Keeping the lower body motionless, hold the chin over the bar for as long as possible.
- The test concludes when the athletes chin drops below the bar.

Scoring:

Record the total time the athlete holds his or her chin over the bar.



5. Single Leg Squat

Rationale for inclusion:

Total body coordination and bodyweight management in the context of single leg strength and control.

Equipment:

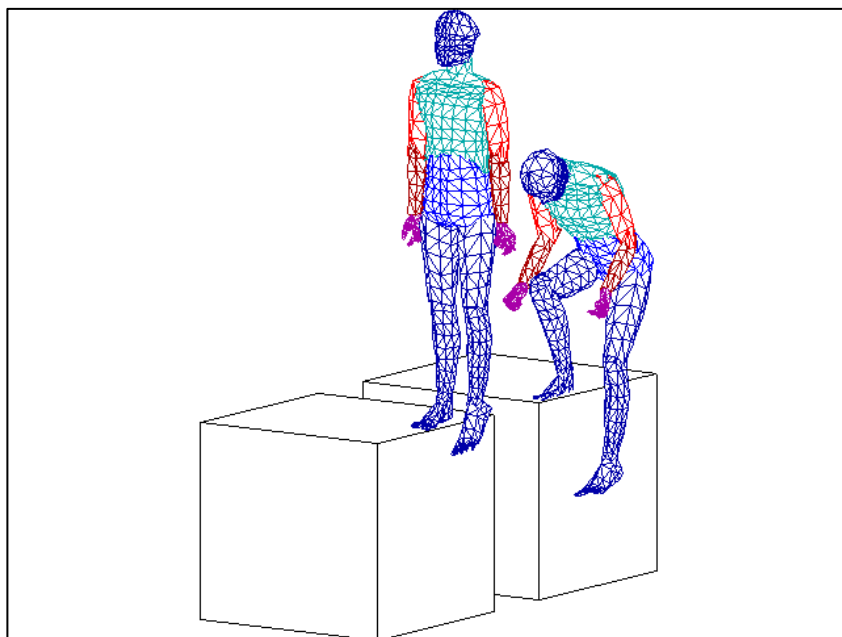
Tall stable box or platform

Single Leg Squat Protocol:

- Start by standing on the top of a tall box. Adjust and balance so that one foot is on the edge of the box and the other foot is hanging off the box.
- With hands in a self-selected position, complete a single leg squat to parallel depth (top of the thigh parallel to top of the box)
- Complete as many reps as possible (up to 15 per leg) while maintaining proper technique.
- The foot not squatting may not touch the box or the ground at any time. If it does touch, the test will be stopped and the reps up until that point will be recorded.

Scoring:

The total number of satisfactory reps will be recorded for each leg. If the athlete reaches 15 reps, he or she has maxed the test out and no further reps will need to be recorded. If at any time the non-working leg touches the box or the ground, the test will be stopped and the reps up until that point will be recorded.



6. 90 Degrees Push Up

Rationale for inclusion:

The push-up test is designed to assess the strength endurance of the athlete's upper body muscles.

Equipment

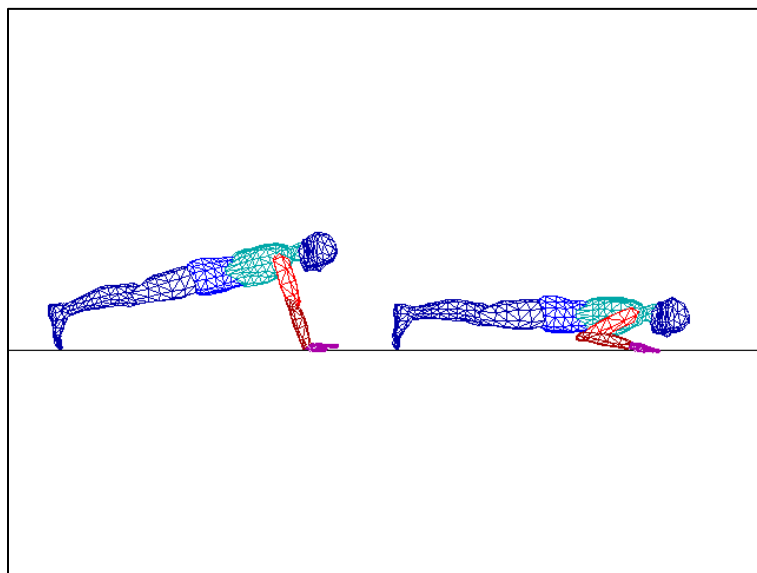
- Audio recording of correct cadence: 1 push-up every 3 seconds
- Phone or MP3 player to play the audio file
- Speakers
- Flat non-slip surface
- Assistant

Push Up Protocol:

- The athlete starts in a push-up position, hands under shoulders, arms straight, fingers pointed forward, and legs straight, parallel and slightly apart (2-4inches) with toes support the feet.
- Keeping the back and knees straight, the athlete then lowers the body until there is a 90-degree angles formed at the elbow with the upper arms parallel to the floor.
- The push-ups are done to a metronome (see audio file), with one push-up completed every three seconds (1.5s on the way down and 1.5s on the way up), and are continued until the athlete can do no more reps at the required pace.
- The athlete should remain in motion during the entire three second interval (no pausing at top or bottom).
- The assistant counts and records the number of correctly completed 90 degree push-ups.
- A "No-Rep" will be given if:
 - Athlete fails to maintain the cadence
 - Athlete fails to maintain a straight line between the shoulders, hips, and heels
 - Athlete fails to achieve a 90 degree angle with the elbows
 - Athlete fails to extend the arms fully
- Athlete is stopped after the second failed rep

Scoring:

The total number of satisfactory reps will be recorded.



7. Repeated Jumps

Age 10-13: Hurdle Jumps

Rationale for inclusion:

This test is a measure of muscular strength and anaerobic endurance specific to skiing.

Equipment:

- Flat non-slip surface, preferably same surface and conditions from test to test
- 2 Hurdles: 6 inches (15cm) high
- Tape measure 1m or longer to determine the width between hurdles
- Stopwatch
- Scoring sheet
- A minimum of 2 spotters

Calibration/Maintenance:

- Check the integrity of the hurdles prior to each test day.

Methodology:

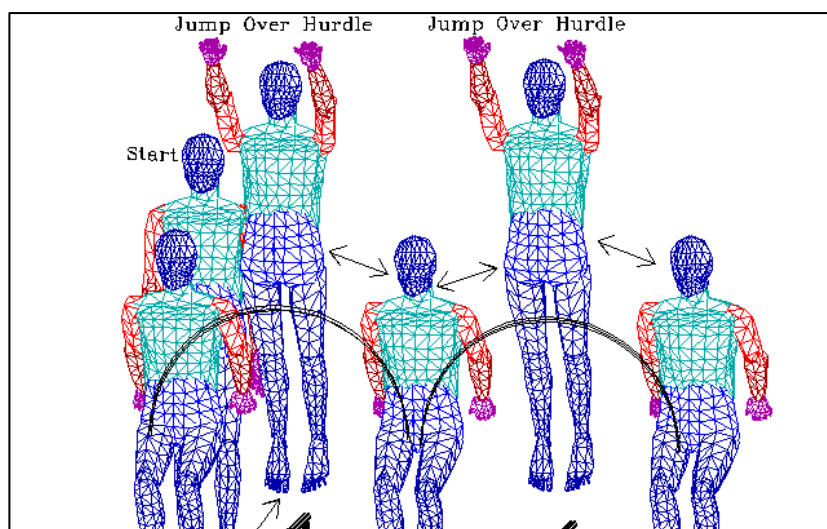
- The test is performed as 60 seconds of maximum jumping.

Hurdle Jump Protocol:

- Two 20x50cm hurdles are placed parallel to one another 60cm apart
- One spotter stands behind each hurdle (two in total) to ensure they remain upright and in place through the test.
- To start, the athlete stands in the middle of the hurdles, waiting for a count down from 3 to 1.
- The timer shouts “go” and starts the stopwatch simultaneously.
- The athlete jumps over one hurdle, and then laterally back and forth over both hurdles in each direction.
- The athlete lands in the middle of the hurdles each time and faces the same way for the entire duration of the test.
- Each time the athlete lands in the middle, between the two hurdles, one jump is recorded.
- If the athlete does not clear the hurdle cleanly, the jump does not count.
- If the hurdle is knocked over or moved by the jumper the spotters should replace the hurdle as soon as possible before the athlete attempts to clear again

Scoring:

- The number of jumps are counted and recorded for 60 seconds.



Age 14 and older: Box Jumps

Rationale for inclusion:

This test is a measure of muscular strength and anaerobic endurance specific to skiing.

Equipment:

- Flat non-slip surface, preferably same surface and conditions from test to test
- Box: 40cm high – 50cm long – 40cm wide
- Box: 30cm high – 50cm long – 40cm wide
- Stopwatch
- Scoring sheet
- A minimum of 2 spotters

Calibration/Maintenance:

Check the integrity of the boxes prior to each test day.

Methodology:

The test is performed as 60 seconds of maximum jumping.

Box Jump Protocol:

- A 30 or 40cm box is chosen, depending upon which is closer to the athlete's kneecap without being above it.
- Two spotters sit on the floor with feet against the box to ensure stability of the box during the test.
- To start, the athlete stands on top of the box, waiting for a count down from 3 to 1.
- The timer shouts "go" and starts the stopwatch simultaneously
- The athlete jumps to one side of the box and on to the ground
The athlete jumps laterally back and forth over the box, landing on the middle of the box and facing the same way for the entire duration of the test.
- Each time the athlete lands on top of the box, one jump is recorded.
- Athletes feet should be facing forward and in line with the box upon landing

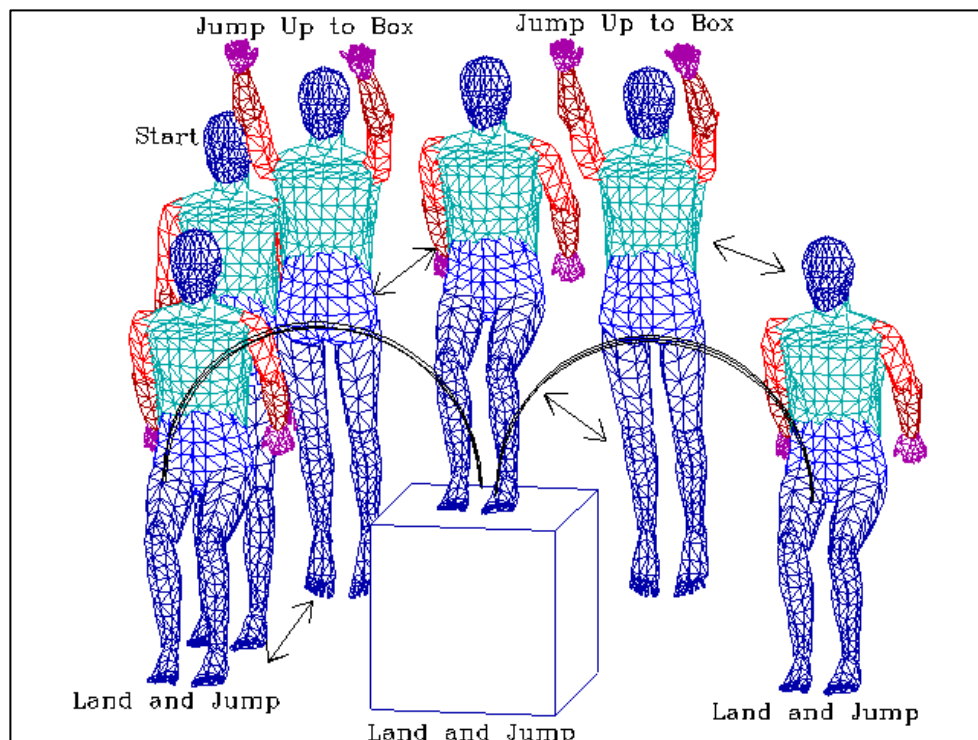
Specific Warm-up:

Athlete should perform 2-3 trials at increasing intensity prior to performing this test, doing 3-4 jumps each time.

Scoring:

The number of jumps are counted and recorded for 60 seconds, including the total for every twenty seconds including the last top touch on the box of each jump period.

USSA Alpine Skiing Fitness Assessment



References

1. Andersen RE, Montgomery DL, and Turcotte RA. An on-site test battery to evaluate giant slalom skiing performance. *J Sports Med Phys Fitness* 30: 276-282, 1990.
2. Docherty D. Field tests and test batteries, in: *Measurement in Pediatric Exercise Science*. D Docherty, ed. Champaign, IL: Human Kinetics, 1996, pp 285-334.
3. Finn J, Gatin P, Withers R, and Green S. Estimation of peak power and anaerobic capacity of athletes, in: *Physiological tests for elite athletes*. CJ Gore, ed. Champaign, IL: Human Kinetics, 2000, pp 37-49.
4. Hatze H. Validity and reliability of methods for testing vertical jumping performance. *J Appl Biomech* 14: 127-140, 1998.
5. McGuigan MR, Sheppard JM, Cormack SJ, and Taylor K-L. Strength and power assessment protocols, in: *Physiological Tests for Elite Athletes*. RK Tanner, CJ Gore, eds. Champaign, IL: Human Kinetics, 2013, pp 207-230.
6. Moir GL. Muscular strength, in: *NSCA's Guide to Tests and Assessments*. T Miller, ed. Champaign, IL: Human Kinetics, 2012, pp 147-191.
7. Patterson C, Raschner C, and Platzer HP. The 2.5-minute loaded repeated jump test: evaluating anaerobic capacity in alpine ski racers with loaded countermovement jumps. *J Strength Cond Res* 28: 2611-2620, 2014.
8. Sands WA. *Talent opportunity program*. Indianapolis, IN: United States Gymnastics Federation, 1993.
9. Sands WA. *1994 Talent Opportunity Program*. Indianapolis, IN: USA Gymnastics, 1994.
10. Sands WA. Physical abilities profiles - 1993 National TOPs testing. *Technique* 14(8): 15-20, 1994.
11. Sands WA. Physical abilities profiles - 1993 national TOPs testing, in: *1994 Congress, USA Gymnastics Proceedings Book*. S Whitlock, ed. Indianapolis, IN: USA Gymnastics, 1994, pp 29-34.
12. Tanner RK and Gore CJ. *Physiological Tests for Elite Athletes*. Champaign, IL: Human Kinetics, 2013.
13. Van Praagh E and Franca NM. Measuring maximal short-term power output during growth, in: *Pediatric anaerobic performance*. E Van Praagh, ed. Champaign, IL: Human Kinetics, 1998, pp 155-189.
14. Verkhoshansky Y and Siff M. *Supertraining*. Rome, Italy: Ultimate Athlete Concepts, 2009.
15. Warren G. 1994 National TOPs Report. *Technique* 16(1): 38-39, 1995.
16. Woolford SM, Polglaze T, Rowsell G, and Spencer M. Field testing principles and protocols, in: *Physiological Tests for Elite Athletes*. RK Tanner, CJ Gore, eds. Champaign, IL: Human Kinetics, 2013, pp 231-248.

Australian Institute of Sport 20m Shuttle-Run Score Sheet

Tester: _____ Date: _____/_____/_____ MM/DD/YY

Sport: _____ Group: _____

Testing Time: _____ Testing Location: _____

Testing Surface: _____ Temperature: _____ F/C

Humidity: _____ Wind Direction: _____

Training Phase:

- Transition General Preparation Specific Preparation Competition Peak Rehabilitation

Athlete	DOB	Level	Total	Comments

Broad Jump and Triple Broad Jump Score Sheet

Tester: _____ Date: _____/_____/_____ MM/DD/YY

Sport: _____ Group: _____

Testing Time: _____ Testing Location: _____

Testing Surface: _____ Temperature: _____ F/C

Humidity: _____ Wind Direction: _____

Training Phase:

Transition General Preparation Specific Preparation Competition Peak Rehabilitation

Athlete	DOB	Single/Triple	Trial 1(cm)	Trial 2(cm)	Trial 3(cm)	Comments
		S T				
		S T				
		S T				
		S T				
		S T				
		S T				
		S T				
		S T				
		S T				
		S T				
		S T				
		S T				
		S T				
		S T				
		S T				
		S T				
		S T				
		S T				
		S T				
		S T				
		S T				

20m Sprint Score Sheet

Tester: _____ Date: _____/_____/_____ MM/DD/YY

Sport: _____ Group: _____

Testing Time: _____ Testing Location: _____ Timing Gates: _____

Testing Surface: _____ Temperature: _____ F/C

Humidity: _____ Wind Direction: _____ Wind Speed: _____

Training Phase:

Transition General Preparation Specific Preparation Competition Peak Rehabilitation

Athlete	DOB	Trial 1(s)	Trial 2(s)	Trial 3(s)	Comments

Strict Pull Ups Test Score Sheet

Tester: _____ Date: ____/____/____ MM/DD/YY

Sport: _____ Group: _____

Testing Time: _____ Testing Location: _____ Bar Height: _____

Testing Surface: _____ Temperature: _____ F/C Humidity: _____

Training Phase:

Transition General Preparation Specific Preparation Competition Peak Rehabilitation

Athlete	DOB	Trial 1(reps)	Trial 2(reps)	Comments

Single Leg Squat Score Sheet

Tester: _____ Date: ____/____/____ MM/DD/YY

Sport: _____ Group: _____

Testing Time: _____ Testing Location: _____ Box Height: _____

Testing Surface: _____ Temperature: _____ F/C Humidity: _____

Training Phase:

- Transition General Preparation Specific Preparation Competition Peak Rehabilitation

Athlete	DOB	Trial 1(reps)	Trial 2(reps)	Comments

1-Minute Push Up Test Score Sheet

Tester: _____ Date: _____/_____/_____ MM/DD/YY

Sport: _____ Group: _____

Testing Time: _____ Testing Location: _____

Testing Surface: _____ Temperature: _____ F/C Humidity: _____

Training Phase:

Transition General Preparation Specific Preparation Competition Peak Rehabilitation

Athlete	DOB	Trial 1(reps)	Trial 2(reps)	Comments

Repeated Jumps Test Score Sheet

Tester: _____ Date: _____ / _____ / _____ MM/DD/YY

Sport: _____ Group: _____

Testing Time: _____ Testing Location: _____ Hurdle Height _____ Box Height _____

Testing Surface: _____ Temperature: _____ F/C Humidity: _____

Training Phase:

Transition General Preparation Specific Preparation Competition Peak Rehabilitation

Athlete	DOB	Level	Jumps			Total Jumps (L1-4)
			0-20s	20-40s	40-60s	
		1-2 3-4 5-6				
		1-2 3-4 5-6				
		1-2 3-4 5-6				
		1-2 3-4 5-6				
		1-2 3-4 5-6				
		1-2 3-4 5-6				
		1-2 3-4 5-6				
		1-2 3-4 5-6				
		1-2 3-4 5-6				
		1-2 3-4 5-6				
		1-2 3-4 5-6				
		1-2 3-4 5-6				
		1-2 3-4 5-6				
		1-2 3-4 5-6				
		1-2 3-4 5-6				
		1-2 3-4 5-6				
		1-2 3-4 5-6				